



Sri
Sayuktha Enclave



2 & 3 BHK Deluxe flats

Living Luxury

What is life at **Sri Sayuktha Enclave**

Sri Sayuktha Enclave is a magnificent project coming up at Nagarabhavi, 9th Block, 2nd Stage, Bangalore, offering 2 and 3 fully customised luxurious apartments that will simply inspire your senses and take your breath away. Inspired by the simplicity of mother nature and its peace, **Sri Sayuktha Enclave** will comprise of 8 exquisitely built luxury apartments.

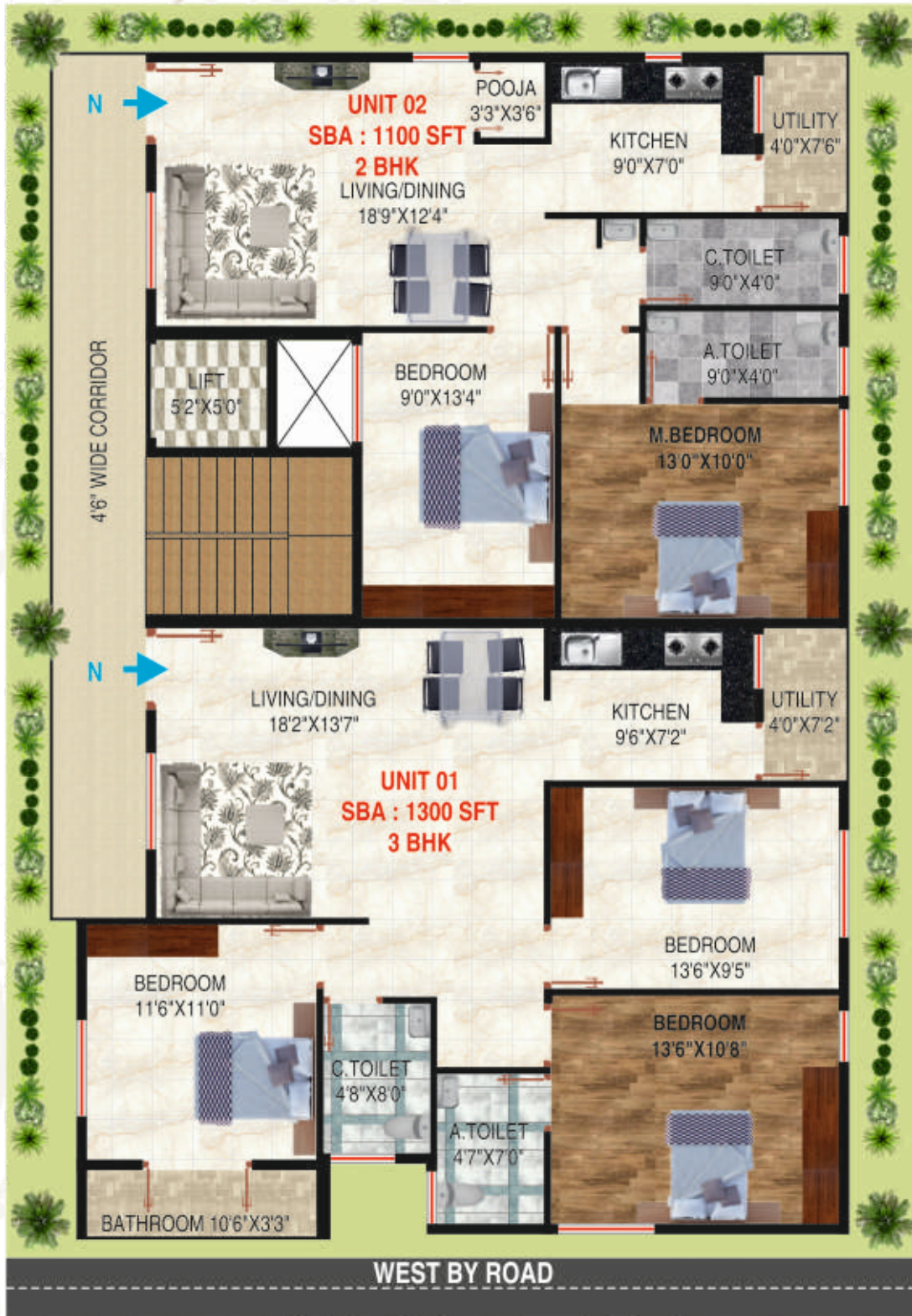
This masterpiece is designed with a panoramic insight as it gives an extended invitation to factors such as plentiful light, ventilation, open spaces and green areas, without really compromising on the privacy element. Through a rich array of exclusive facilities, **Sri Sayuktha Enclave** would make your life healthier, more relaxing and rewarding, and hence redefining your comfort and lifestyle quotient.



Sri Sayuktha Enclave



TYPICAL FLOOR PLAN



ISOMETRIC VIEWS

UNIT 01 TYPE : 3 BHK
AREA : 1300 SFT.



UNIT 02 TYPE : 2 BHK
AREA : 1100 SFT.



CAR PARKING FLOOR PLAN



SPECIFICATIONS

STRUCTURE

R.C.C framed structure designed for zone II regulations.

WALLS

6" thick external walls and 4" thick internal walls of solid block masonry.

FLOORING

- Vitrified tile flooring for all flats.
- Staircase and lobbies with granite flooring.

DOORS

- Solid teak wood for main doors.
- All other doors are sal wood with flush doors.

WINDOWS

Sliding 3 track UPVC frames with MS grills.

KITCHEN

Stainless steel sink on 20 mm granite platform, 3' height dadoo above platform. Power point provision for drinking water purifier, refrigerator, cooking range and exhaust fans.

TOILETS

- Anti-skid ceramic tiles for flooring
- Glazed tiles dadoo upto 7' height for toilet.
- EWC and wash basins of ISI Make.
- Quality CP fixtures & single lever diverter of Jaguar Make.

PAINTING

- Internal walls : Acrylic emulsion.
- External walls : Weather proof Cement Based paint.
- Doors & grills : Enamel paint.
- Polish : Main door.

ELECTRICAL

- Finolex/equivalent FTLS copper wires.
- TV and telephone points in living and master bedrooms.
- Quality switches : Anchor/GM/equivalent
- 24 hours power supply with power backup / DG Set.

CAR PARKING

- Stilt level parking with tile flooring.

WATER SUPPLY

- Department supply & auxiliary, bore well supply.

LIFT

- Provision for all the floors (5 Passengers Capacity).

CC TV Camera

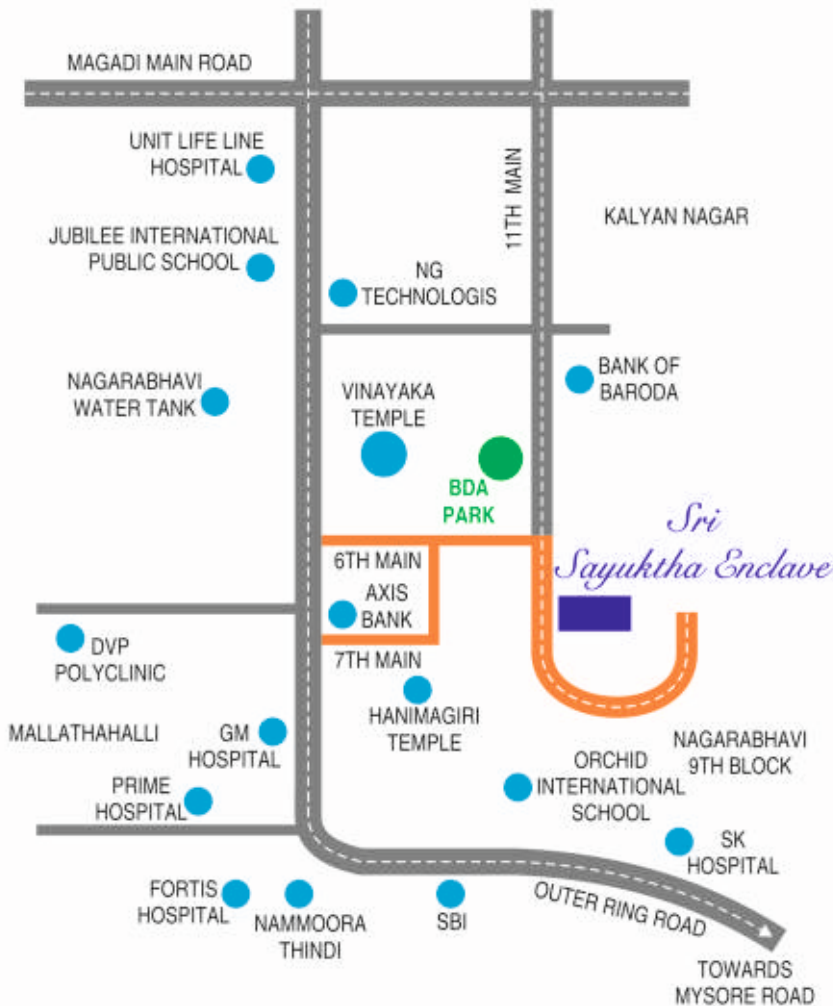
- Provision for CC TV Camera.

AREA STATEMENTS

SL. No.	FLOORS	IN S.F.T. (APPROX.)	
1.	Ground Floor	G.F.1 1300	G.F.2 1100
2.	First Floor	F.F.1 1300	F.F.2 1100
3.	Second Floor	S.F.1 1300	S.F.2 1100
4.	Third Floor	T.F.1 1300	T.F.2 1100



LOCATION MAP



Location Details

Schools :

- Jubilee International Public School - 8 Mins.
- Orchids International School - 6 Mins.
- The Oxford English School - 12 Mins.
- JES Public School - 15 Mins.

Colleges :

- NRI Group of Institutions - 10 Mins.
- BSV PU College - 12 Mins.
- Mahesh PU College - 16 Mins.

Hospitals :

- GM Hospital - 7 Mins.
- SK Hospital - 10 Mins.
- Fortis Hospital - 15 Mins.
- Unit Lifeline Hospital - 20 Mins.

Banks :

- Axis Bank - 5 Mins.
- SBI - 8 Mins.
- ICICI Bank - 18 Mins.
- HDFC - 22 Mins.

Site office

Sri Sayuktha Enclave

146, 11th Main, 9th Block,
2nd Stage, Nagarbhavi,
Bengaluru - 560 072.

For booking/details contact :

+91 94494 74949

+91 94486 16723

This brochure is purely conceptual. It is by no means a legal document. The promoters, developers and the architects reserve the right to add, delete or alter any specifications, elevation or areas mentioned herein. If required.